

**WORKIO**<sup>®</sup>

DP-190



intelligent



**Panasonic ideas for life**

# The Intelligent Choice For Your Office

Bringing the latest in cutting-edge technology to your office, the intelligent WORKiO DP-190 will help you meet your document processing needs and manage your documents more effectively than ever. From copying and color scanning to printing and faxing, the DP-190 is the ultimate all-round document management tool for small departments and workgroups. It comes with both Automatic Document Feeder (ADF) and a built-in duplex unit, so you can use it as a powerful plain paper copier with up to 19 cpm capability that rivals dedicated copiers.

The DP-190 also features a color flatbed scanner that makes it easy to digitize paper documents and transfer the files directly to a PC on the network or send them as email attachments to remote computers via the Internet. And with automated network installation capability, the DP-190 can be plugged into your existing LAN, so you can immediately use it as a high-performing network printer\*. Use the DP-190 as a Super G3 fax with JBIG compression for fast, high-quality transmission for superior office performance.

The DP-190 from Panasonic — it's the intelligent solution for your business.

\* Requires a DHCP server on the network.



# The DP-190 can handle all yo

## Versatile Copying Capability

## Network Color Scanner



## Standard Network Printer

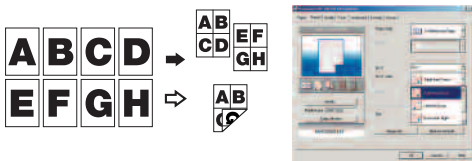


### Digital SkyShot

Panasonic's Digital SkyShot is especially convenient for copying small-sized originals like checks or ID cards. Users can even reproduce documents with unusual shapes — round, oval, etc. — without generating any unnecessary black areas simply by making a copy with the platen cover open.

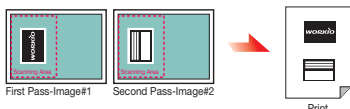
### N-in-1 Copying/Printing

N-in-1 enables copying of multiple originals on a single sheet of paper, accelerating document production while reducing paper consumption.



### Double Exposure for Double Savings

By selecting the Double Exposure key located on the control panel, users can make quality copies of small double-sided documents on a single sheet of paper without the black borders — even if the platen cover is open. This is especially convenient for copying small double-sided originals such as ID and insurance cards, checks, and receipts.



### Scan-to-PC

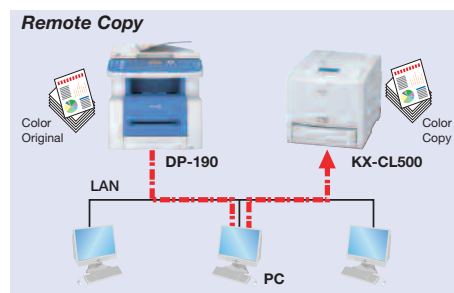
Scan-to-PC lets users digitize virtually any kind of document — even handwritten notes or sketches — and convert it to a PDF, TIFF or JPEG file and send it to a networked PC.

### Document Management System Software

Panasonic Document Management System software allows efficient document management, flexible editing and convenient sharing at the user's fingertips. Users can manage and edit documents right from their desktop with a simple "drag and drop" operation.

### Remote Copy

When users press the Remote Copy key, the DP-190 automatically sends the scanned data through the PC to a pre-selected network printer. This allows users to easily make color copies of a color document when a color printer is connected to the LAN.



### Built-in Network Printing Capability

The DP-190 comes standard with a built-in network board and an Ethernet LAN port, so users can set it up as a network printer that can be used by PCs on the LAN. No special options are required for the Panasonic printing system for Windows®. In addition, the standard USB 1.1 interface allows direct connection to a dedicated PC.

### Automated Network Installation Capability\*

The DP-190 allows simple network installation. Simply plug the network cable into the DP-190's Ethernet port, and the network information is automatically acquired from the server. No complex setup required.

\* Requires a DHCP server on the network.

### High-Resolution of 1200-equivalent x 600 dpi

In addition to standard 600 x 600 dpi print resolution, you can boost print resolution to 1200 dpi-equivalent x 600 dpi (in PCL/PS mode) by adding our optional printer controller. This gives crisp, clean prints with superior legibility and halftone gradations — even with very tiny characters or complex images.

### Standard Duplex Printing

For added convenience, the DP-190 comes standard with a duplex printing unit that enables users to easily print on both sides of a sheet of paper. Reduce paper consumption by using duplex printing when printing faxes or copying.

# ur office demands

## Super G3 Fax and Email



## Intuitive Control with Easy-to-Use GUI Software

## Superior Performance



### Quick Memory Transmission

As soon as the first page of a multi-page fax has been scanned, the DP-190 starts dialing. Transmission takes place as additional pages are being scanned, saving time, as well as increasing productivity.

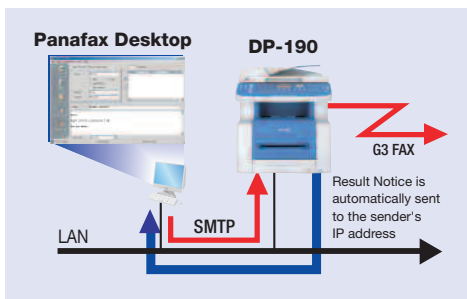
### Internet Fax / Scan-to-Email

The DP-190 can send documents as TIFF, JBIG images or PDF files, and transmit them as email attachments to PCs or other machines\*, saving time and money.

\* Internet Fax only supports TIFF-FX format.

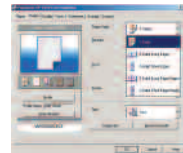
### Network Panafax® Desktop Software

The Panafax® Desktop software allows users to send a fax directly from their PC without having to print it before transmitting. The PC fax capability increases productivity while decreasing paper consumption.



### GUI Printer Driver

Easy-to-install graphical printer driver empowers users with full control of versatile printing functions right from your PC desktop.



From the intuitive tabbed interface to on-screen graphic preview of job settings, everything is designed to maximize ease of use, and eliminate errors.

### Network Status Monitor

Status monitor lets the user monitor the DP-190's status directly from their desktop, including print job status, paper jams, machine configuration, and much more. Users will always have prior notice regarding the paper supply level and toner level.



### Completion Notice

As soon as a print job is completed, the DP-190 automatically sends a Completion Notice to the user's desktop to notify them that the job has been completed, eliminating needless trips to check the machine.

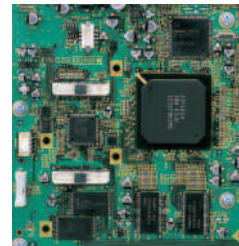
### Security Print/Mailbox\*

Security printing for up to 100 users is available. Simply print directly to the Security Print Mailbox\* and the DP-190 stores the print file until the user retrieves it at the machine by entering a user ID and password. This is extremely useful when generating sensitive and confidential documents.

\*Only available if the optional hard disk unit is installed.

### Fast Processing

Powered by a high-performance 200-MHz microprocessor and custom-developed LSIs, the DP-190's high-speed image processing and quality enable high-speed printing and multi-task operations.



### Extended Reliability

The Check & Call function automatically reports low toner status and certain mechanical problems to a service center while the Remote Diagnostic System enables expert technicians to quickly troubleshoot and provide solutions via a telephone line or the Internet.





## Advanced Digital Copier

- Up to 19 cpm digital copying (Letter)
- Duplex copy/print
- 50-sheet ADF (Automatic Document Feeder)
- Double Exposure/Digital SkyShot
- N-in-1 copy/print

## Network Color Scanner

- Flatbed color scanner
- 300 x 300 dpi
- Send-to-PC/Scan-to-Email
- Remote Copy

## Network Printer

- Up to 19 ppm B/W printing (Letter)
- Ethernet and USB connection
- 600 x 600 dpi printing resolution
- 1200 dpi equivalent resolution\*

\* With Panasonic image enhancement technology. (Optional printer controller module is required.)

## Super G3 Fax

- 33.6 kbps Super G3 fax modem
- 2.7-second transmission (Letter)
- Quick memory transmission

---

# The compact & powerful multifunction tool you're waiting for.

---

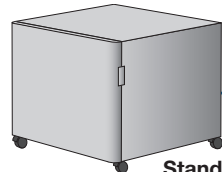
## Options

### Flash Memory

**4MB Flash Memory**  
UE-410047F  
**8MB Flash Memory**  
UE-410048F



Handset Kit UE-403171



Stand DA1D190



**550-sheet  
2nd Paper  
Feed Module**  
DA-DS188

### Printer/Network Printer

Expansion Board DA-EM600F

**PCL Printer Controller Module**  
DA-PC188

**PS/PCL Multi-Page Description  
Language Controller Module**  
DA-MC188

### Image Memory

**Image Memory**  
(16MB) DA-SM16B  
(64MB) DA-SM64B  
(128MB) DA-SM28B

### Hard Disk Drive Unit

**Hard Disk Drive Unit (40GB) DA-HD19**

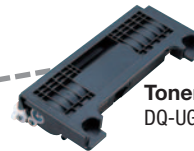
### Software

**Accounting Software DA-WA10**

### Consumables



**Drum Unit**  
DQ-UH35H



**Toner Cartridge**  
DQ-UG17H

## DP-190 Specifications

### General Functions

Type	Desktop
Print Process	Laser Indirect Electrostatic
Developing Process	Dry Single Component
Automatic Document Feeder	50 sheets (Letter: 20 lb)
Paper Feed	Standard 250 sheets paper tray unit x 1 + 1-sheet bypass Maximum 800 sheets with option

### Paper Weight

Paper Tray:	16 to 28 lb (60 to 105 g/m <sup>2</sup> )
Bypass:	16 to 44 lb (60 to 165 g/m <sup>2</sup> )

### Power Requirements

AC 120 V, 60 Hz

### Power Consumption

Maximum Power:	900 W
Power Saver Mode:	Approximately 20 Wh
Sleep Mode:	Approximately 12 Wh

### Dimensions (W x D x H)\*1

18.2" x 19.9" x 20.6"

### (Excluding optional equipment)

(462 x 506 x 523 mm)

### Weight\*1

Approximately 48.5 lb

### (Excluding optional equipment)

(Approximately 22 kg)

### Digital Copier Functions

First Copy Time	Approximately 10 seconds (Letter)
Resolution	600 x 600 dpi
Gray Scale	256 steps
Multi Copy Speed*2	Up to 19 cpm
Maximum Original Size	Letter, Legal*3
Copy Size	Letter/Legal/Invoice*4
Copy Ratio	
Enlargement (fixed)	155 %, 129 %
Reduction (fixed)	79 %, 65 %, 61 %
Zoom (variable)	50 – 200 % (in 1 % increments)
Multiple Copy	1 to 999, Automatic reset to 1
Exposure Controller	Text, Text/Photo, Photo

### Image Memory for Sorting

Standard	16MB
Optional	16 MB/64MB/128MB (Maximum 144MB) 12GB (with optional HDD)

### Network Scanner Functions

Network Scanner Interface	Ethernet 10Base-T/100Base-TX
Scanning Size	Letter/Legal*3/Invoice
Scanning Resolution	
Color:	75 x 75 dpi, 150 x 150 dpi, 300 x 300 dpi
Black & White:	150 x 150 dpi, 300 x 300 dpi, 600 x 600 dpi

### Scanning Speed\*5

Color:	Approximately 11 seconds (Letter)
Black & White:	Approximately 2.7 seconds

### Coding Scheme

Color:	JPEG
Black & White:	JBIG/MMR/MR/MH

### Data Format

Color:	JPEG, PDF
Black & White:	TIFF, PDF

### Network Printer Functions

Printer Interface	Ethernet 10Base-T/100Base-TX
Local Printer Interface	USB1.1
Printer Language	
Standard	Panasonic Printing System for Windows®
Option	PCL 6 Emulation, Adobe® PostScript® 3™
Printing Speed*2	Up to 19 ppm
Paper Size	Letter/Legal/Invoice*4, Envelope*4
Printing Resolution	1,200 dpi equivalent x 600 dpi (PCL, PS) 600 dpi x 600 dpi, 300 dpi x 300 dpi (GDI, PCL, PS)
Printer Memory	20MB
Compatible Operating Systems	Windows® XP/2000/Server 2003*8/ 98/Me, Windows NT® 4.0 Mac OS 8.6 – 10.3 (PS only)

### G3 Fax Functions

Compatibility	ITU-T Group 3, ECM
Modem Speed	33.6 kbps - 2.4kbps with automatic fallback
Coding Scheme	JBIG/MMR/MR/MH
Transmission Speed*6	Approximately 2.7 seconds
Scanning Speed*5	2.7 seconds (Letter portrait in Standard or Fine Mode)

### Scanning Resolution

Standard:	203 dots/inch x 98 lines/inch (8 dots/mm x 3.85 lines/mm)
Fine:	203 dots/inch x 196 lines/inch (8 dots/mm x 7.7 lines/mm)
Super Fine:	406 dots/inch x 391 lines/inch (16 dots/mm x 15.4 lines/mm)
600 dpi:	600 x 600 dpi

### Effective Scanning Width

8.34" (212 mm)

### Recording Resolution

Maximum 600 x 600 dpi

### Standard Memory\*7

2MB (approximately 120 pages)

### Optional Memory\*7

Base memory plus 4MB (320 pages)/  
8MB (640 pages)

### No. of Auto Dialers

200 (Maximum 1,000 with optional HDD)

### Scan-to-Email / Internet Fax Functions

Compatibility	IETF RFC 2305, ITU-T T.37
Communication Protocol	TCP/IP, SMTP, POP3, MIME, DHCP LDAP, SNMP/MIB
Network Connectivity	Ethernet 10BASE-T /100BASE-TX (IEEE802.3)
Data Format*9	TIFF-FX (Profile S/F/J), PDF, JPEG

### Notes

- \*1 Dimensions and weight are approximate.
- \*2 Speeds are contingent upon applications, machine configuration, and status. Individual speeds may vary.
- \*3 from ADF only
- \*4 Bypass only
- \*5 Scanning speed applies to the feeding process from the top to the end of a single page test chart. The time for the feeding process does not include the time that it takes for the top edge of the page to reach the scanning point and page ejection. Time for entire storing process is not applied.
- \*6 Transmission time applies to memory transmission of text data using only ITU-T Image No.1 between the same modems at maximum mod speed. Transmission time may vary in actual usage. Usually public telephone lines can only support communication speeds of 28.8 Kbps or lower. Via PBX, transmission speed may fall back to a lower speed.
- \*7 Based on ITU-T Image No.1 scanned in Standard mode.
- \*8 Available in the 3rd quarter of 2004
- \*9 Internet Fax only supports TIFF-FX format.

Design and specification are subject to change without notice. Not all options may be available at the time of notification.

Microsoft® Windows® and Windows NT® are registered trademarks of Microsoft Corporation. Adobe®, PostScript®, PostScript®3, PDF and PostScript logo® are trademarks of Adobe Systems, Inc. PCL is either trademark or registered trademark of Hewlett-Packard Company and/or its subsidiaries. WORKIO® is a registered trademark of Matsushita Electric Industrial Co., Ltd. All other brand or product names are the property of their respective holders.

### Dimensions



As an Energy Star® partner, Panasonic has determined that this product meets the Energy Star® guidelines for energy efficiency.

### ISO 9001 Quality Management System

Our business processes which produce document, information and network products, from manufacturing to marketing, conform to ISO9001 Quality Management Systems standard. Design, development, manufacture, installation, repair and maintenance of document, information and network products, their associated devices and consumables. In addition, the plants outside Japan have acquired ISO 9001 certification.



# Panasonic®

Panasonic Digital Document Company  
Unit of Panasonic Corporation of North America  
Two Panasonic Way, Secaucus, NJ 07094  
For a local dealer, please call 1-800-742-8086  
panasonic.com/office